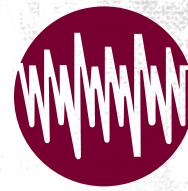


+675 325 3533

ON TIME, WITHIN BUDGET



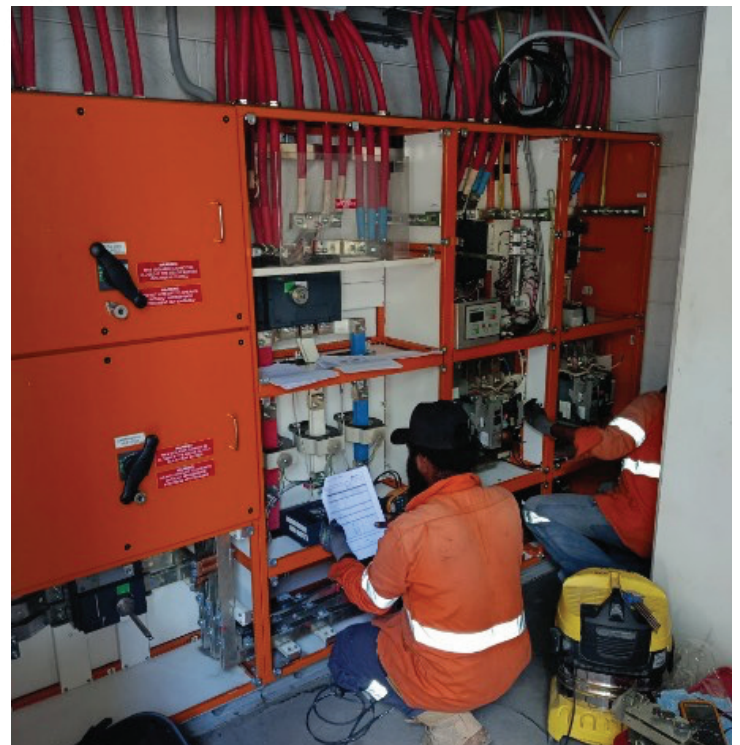
**PME**  
— since 1968 —

## Medium Voltage Switchgear

### Reliable switching solutions for critical infrastructure across Papua New Guinea

At Port Moresby Electrical, we know how important reliable power is for businesses across Papua New Guinea. That's why we provide complete Medium Voltage (MV) Switchgear solutions, from design and installation through to ongoing servicing.

Our team works closely with commercial and industrial operators to ensure power is distributed safely, efficiently, and without interruption. With decades of experience and a strong presence across PNG, we're here to support the systems that keep communities and industries moving.



### Nationwide supply and servicing of MV switchgear backed by technical expertise

From urban developments to remote projects, PME delivers MV switchgear solutions across Papua New Guinea. With an established logistics network and a team of highly trained engineers, we support every stage of the project life cycle from specification and design through to commissioning and long-term maintenance.

At PME you can be assured there are no gimmicks! We offer reliable service, quality products and knowledgeable, well trained staff, to help you take the guess work out of choosing the right solution for you. So call us today and get the best service and price in Port Moresby.

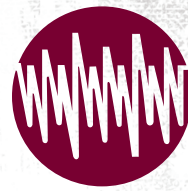


**PME**  
— since 1968 —

PORT MORESBY ELECTRICAL CO.  
PO Box 5555 Port Moresby NCD 111 Papua New Guinea  
+675 325 3533 | [info@pmpng.com](mailto:info@pmpng.com) | [www.pmpng.com](http://www.pmpng.com)

+675 325 3533

ON TIME, WITHIN BUDGET

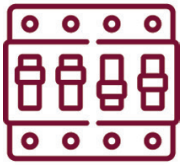


**PME**  
— since 1968 —

## Medium Voltage Switchgear

### Switching that keeps operations safe and reliable

Medium Voltage Switchgear supports the safe transfer of electricity. It allows electricity to be controlled, isolated, and protected in critical facilities, ensuring that faults are contained and the supply remains stable.



#### Safe distribution

MV switchgear routes electricity to the right circuits while providing secure isolation for maintenance and repairs.



#### Fault protection

By detecting and interrupting faults such as overloads and short circuits, switchgear prevents equipment damage and reduces safety risks.



#### Efficient operation

Medium voltage switchgear improves system reliability and performance, reducing downtime and lowering maintenance costs over time.



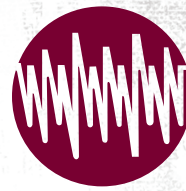
At PME you can be assured there are no gimmicks! We offer reliable service, quality products and knowledgeable, well trained staff, to help you take the guess work out of choosing the right solution for you. So call us today and get the best service and price in Port Moresby.



PORT MORESBY ELECTRICAL CO.  
PO Box 5555 Port Moresby NCD 111 Papua New Guinea  
+675 325 3533 | [info@pmepng.com](mailto:info@pmepng.com) | [www.pmepng.com](http://www.pmepng.com)

+675 325 3533

ON TIME, WITHIN BUDGET



**PME**  
— since 1968 —

## Medium Voltage Switchgear

### Serving industries across Papua New Guinea

Every sector relies on steady, reliable power to keep people safe, businesses productive, and communities connected.

#### Utilities and energy providers

Keeps electricity networks stable and reliable, protecting infrastructure from faults.

#### Government and defence

Provides secure and reliable power for essential services, facilities, and bases.

#### Commercial buildings

Delivers safe, efficient power for shopping centres, office towers, and mixed-use developments.

#### Mining and resources

Supports high-load operations where reliability and safety are essential for productivity.

#### Manufacturing and processing

Protects production lines and heavy machinery from outages and electrical faults.

#### Transport and infrastructure

Supports airports, ports, and rail facilities with reliable distribution and fault protection.



### Serving industries across Papua New Guinea

At PME, safety and environmental responsibility go hand in hand. Our MV switchgear solutions are designed and installed to reduce risks, improve efficiency, and support long-term reliability.

Our team applies structured safety systems to every project, identifying risks early and maintaining secure worksites from planning through to operation.

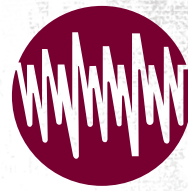
At PME you can be assured there are no gimmicks! We offer reliable service, quality products and knowledgeable, well trained staff, to help you take the guess work out of choosing the right solution for you. So call us today and get the best service and price in Port Moresby.



PORT MORESBY ELECTRICAL CO.  
PO Box 5555 Port Moresby NCD 111 Papua New Guinea  
+675 325 3533 | [info@pmepng.com](mailto:info@pmepng.com) | [www.pmepng.com](http://www.pmepng.com)

+675 325 3533

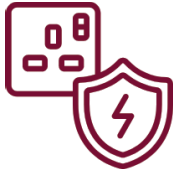
ON TIME, WITHIN BUDGET



**PME**  
— since 1968 —

## Medium Voltage Switchgear

### Why choose PME for MV Switchgear supply and service



#### End-to-end project delivery

We manage the full process from design, specification and procurement to installation, testing and commissioning.



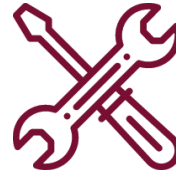
#### Certified & experienced installers

Our electrical team is certified to install and maintain MV switchgear systems from reputable OEMs, with a strong track record in utility, mining, and large infrastructure projects.



#### Safety & compliance

All installations are carried out in full compliance with international standards and local regulations, prioritising safety and reliability.



#### Ongoing maintenance & support

PME offers routine testing, thermographic scanning, and emergency servicing to ensure your switchgear continues to operate safely and efficiently.



#### Customised switchgear solutions

We tailor our solutions to suit site-specific voltage levels, short-circuit ratings, protection requirements, and control interfaces.

At PME you can be assured there are no gimmicks! We offer reliable service, quality products and knowledgeable, well trained staff, to help you take the guess work out of choosing the right solution for you. So call us today and get the best service and price in Port Moresby.



PORT MORESBY ELECTRICAL CO.  
PO Box 5555 Port Moresby NCD 111 Papua New Guinea  
+675 325 3533 | [info@pmepng.com](mailto:info@pmepng.com) | [www.pmepng.com](http://www.pmepng.com)